



Church Road, Swanscombe, DA10 0HF  
Guide price £280,000 Freehold

 2  1  1  D

The Homes Group are delighted to offer this beautifully presented bedroom Victorian Style terraced house located within close proximity of both Swanscombe and Ebbsfleet International Stations.

The accommodation comprises of a 25' living/dining room, a 13'10 x 7' modern fitted kitchen, a 12'2 x 10' main bedroom, an 11' x 9'1 second bedroom and an 8' x 7' dressing room which leads into the modern first floor bathroom.

There is a 35' rear garden and at the end of the garden is the 16'4 x 9' shed which has been used as a garage previously via the access road to the rear.

#### Enclosed Porch

#### Living/Dining Room

24'11" into bay x 12'2" (7.62m into bay x 3.71m)

#### Kitchen

13'10 x 7' (4.22m x 2.13m)

#### Landing

#### Bedroom One

12'2 x 10' (3.71m x 3.05m)

#### Bedroom Two

11' x 9'1 (3.35m x 2.77m)

#### Dressing Room

8' x 7' (2.44m x 2.13m)

#### First Floor Bathroom

7' x 5'10 (2.13m x 1.78m)

#### Rear Garden

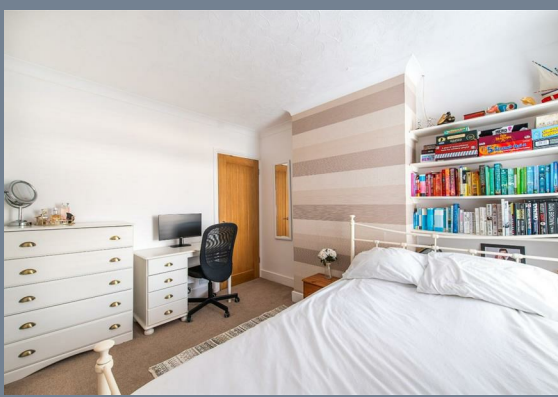
35' (10.67m)

#### Shed/Garage

16'4 x 9' (4.98m x 2.74m)

#### Tenure - Freehold

#### Council Tax - Band B





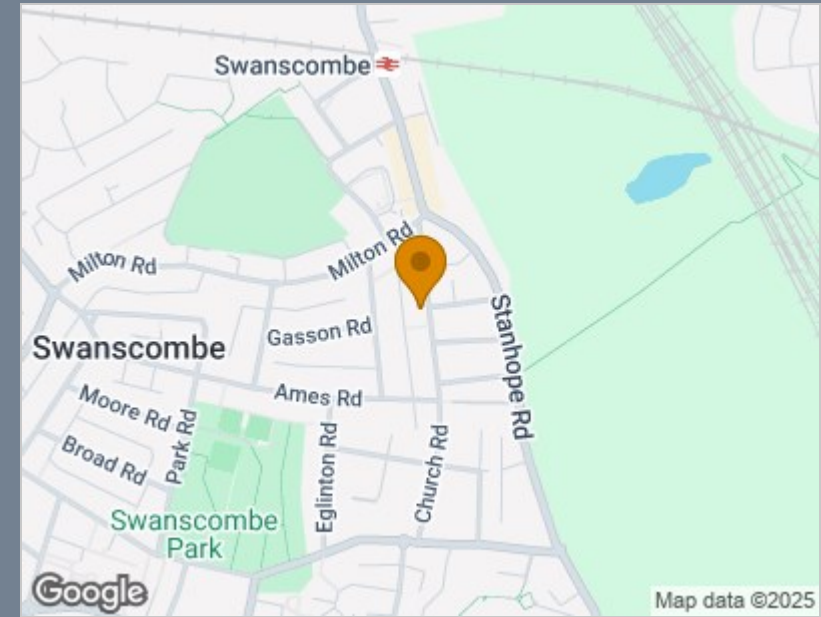
**Ground Floor**  
Approx. 35.7 sq. metres (384.6 sq. feet)



**First Floor**  
Approx. 37.1 sq. metres (399.6 sq. feet)



Total area: approx. 72.9 sq. metres (784.2 sq. feet)



Energy Efficiency Rating		
	Current	Potential
Very energy efficient - lower running costs		
(92 plus) <b>A</b>		
(81-91) <b>B</b>		<b>87</b>
(69-80) <b>C</b>	<b>67</b>	
(55-68) <b>D</b>		
(39-54) <b>E</b>		
(21-38) <b>F</b>		
(1-20) <b>G</b>		
Not energy efficient - higher running costs		
<b>England &amp; Wales</b>	EU Directive 2002/91/EC	

## Viewing

Please contact The Homes Group Office on 01322 875000 if you wish to arrange a viewing appointment for this property or require further information.

These particulars, whilst believed to be accurate are set out as a general outline only for guidance and do not constitute any part of an offer or contract. Intending purchasers should not rely on them as statements of representation of fact, but must satisfy themselves by inspection or otherwise as to their accuracy. No person in this firm's employment has the authority to make or give any representation or warranty in respect of the property.